



## **Siemens Automation & Motion Division (AMD) Siemens Automation Cooperates with Education (SCE)**

Siemens the global leader in automation is proud to provide an educational support program for institutions interested in advancing technical curriculums and supporting local industry. Siemens has a long and successful history of public education support. From high-school mentoring programs through post-graduate research, Siemens is a partner with education around the globe. Siemens AMD welcomes public institutions to explore the US Siemens Automation Cooperates with Education program and become a partner with Totally Integrated Automation from Siemens.

Siemens understands that a quality education program requires the core elements of; 1) instructor training, 2) hardware & software, 3) curriculum and 4) continued support. The SCE program addresses these elements to help bring your program on-line quickly and efficiently. The SCE program provides a highly flexible approach to introduce Siemens automation technologies into your classroom. From a simple “Micro-Systems” programmable logic controller (PLC) to a complete simulated factory “Mechatronics” system, Siemens can help tailor a solution that meets your needs.

The SCE program is designed to provide a foundation for your upgrade to Siemens automation technologies. Experienced Siemens staff are also available to discuss program options and design a solution that meets your needs, your budget and your vision. Siemens Automation & Motion, the fastest growing and most innovative company in the industry, welcomes you to explore the values of the SCE program and to join the team as an education partner!



## SCE Program Qualification

SCE is a program designed to support public education. Program participants must meet the standards of not-for-profit, educational institutions which are open to the general public. The SCE program discounts and support services are typically viewed as a “like-in-kind donation” from Siemens and include incentives up to 90% off of commercial prices. Program participants are required to submit an application for participation in the program which includes a brief statement of need and implementation. Terms and conditions of the program are detailed in the application form. Registration is required for all software purchases, forms are available from the SITRAIN web site.

Siemens interests are that program participants enjoy a successful implementation of new technology and that staff are adequately trained to deliver quality instruction. As Siemens continues to grow in the global industrial market, it is increasingly important that Siemens experienced job candidates are available to industry. The SCE partner schools will join to create a network of schools sharing best practices, building curriculum and growing together. Most important, the SCE program will provide value to students, the institutions and local industry as local automation technology leaders.

A summary of the SCE program highlights and options are described below. Please visit our web site or give us a call for more details.

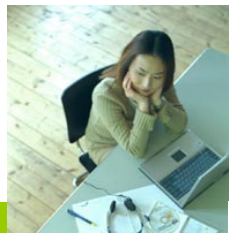
## Hardware and Software Options

### SCE Packages

Trainer’s Packages - The SCE program has packaged some of the most popular and technology leading hardware and software into pre-configured bundles. These pre-configured Trainer’s Packages offer outstanding value and ease of ordering. Most SCE packages represent price discounts of up to 90% from Siemens list prices! There are over 25 different bundles available including Programmable Controls, HMI, networks and Distributed Control Systems.

For a complete listing of the SCE program bundles, please visit our web site and download the Siemens Automation Cooperates with Education – Trainer’s Packages document. Orders should be processed through your local Siemens Technology Center (STC - distributor). Most SCE Trainer’s Packages require some assembly, mounting and wiring.

Siemens AMD also offers discounts to participants on all “standard” automation system components. This offer applies to Discrete Automation products only (excludes most drive and machine tool products). Contact your local Siemens account manager or distributor for details.



## Partner Systems

Siemens support for education includes didactic equipment partnerships with leading providers of scholastic equipment. Suppliers such as AMATROL, FESTO and Lab Volt have responded to schools and industry with new lines of Siemens based training systems. From PLC workstations to impressive Mechatronics assembly systems, Siemens educational partners are answering the call. For more information on Siemens based systems please visit the SITRAIN web site, Educational Support Program page.

## Packaged & Custom Systems

Siemens has a line of fully functional simulator systems ready to “plug & play”. Visit our web site and the Simulator Systems link for pictures and details. Siemens can also help design and build a custom simulator system to meet your specific needs. From simple table-top units to fully integrated systems with your existing rigs, Siemens can help design, specify and build a custom system for your program. Custom systems start with a consultation meeting to understand needs, future direction and budget constraints. A proposal will follow which leverages applicable educational program discounts. For more information, please give us a call.



## Instructor Training

### Siemens Scheduled Courses

Siemens AMD welcomes public education professionals to attend our scheduled, open-enrollment courses at a significant savings. Siemens AMD conducts over 750 courses per year with over 80 individual course titles. Headquartered in Atlanta, GA with training centers across the country, Siemens is ready with the training needed to get your instructors thoroughly prepared. Please visit our web site for course information, schedules and registration.

### Mechatronics Certification

The Siemens Technical Academy in Berlin, Germany sponsors a comprehensive certification program for your institution, staff and students! Mechatronics, the integration of “mechanical, automation, and networking” into a unified systems learning approach is attracting interest from education and industry across the country. For more information please visit the following web sites;

[www.siemens-certifications.com](http://www.siemens-certifications.com)

(Siemens Technical Academy – Berlin, Germany)

<http://ti.westkentucky.kctcs.edu/mechatronic/>

(Kentucky Community and Technical College System)

[www.automation.usa.siemens.com/sitrain](http://www.automation.usa.siemens.com/sitrain)

Contact your local Siemens distributor for ordering





## Curriculum Options

### Siemens Curriculum-

Siemens AMD offers a number of options for partner schools to leverage existing course materials and support tools to help jump start a training program. These materials are available for purchase as individual student “kits” or as a source material license for customizing to your specific needs. Please call for more information.

### Partner Curriculum –

Most Siemens education equipment partners also have curriculum designed around their packaged systems or programs. Please contact these partners directly to explore curriculum options.

## Continued Support

- 1. Service & Support Web Site** - Siemens offers one of the most comprehensive service and support web sites in the industry. With product updates, software downloads, on-line documentation and “frequently asked questions” (FAQs) this site is an outstanding source for self-serve information. [www.automation.usa.siemens.com](http://www.automation.usa.siemens.com) >> Support
- 2. Siemens Automation Cooperates with Education (SCE) Web Site** - Siemens SCE program maintains a web site with helpful information and tools to support educational institutions. Please visit this web site at; [www.siemens.com/sce](http://www.siemens.com/sce)
- 3. Local Siemens Technology Center (STC) Support** - Local support is important and Siemens has an outstanding network of over 65 technology partners (distributors) who are capable of providing technical and logistics support. To find an STC near you, use the Distributor Locator tool available on all Siemens AMD US web sites.
- 4. Siemens Technical Services Hotline** - Siemens Technical Services organization is one of the best in the industry providing “24-7” phone support for technical questions and problem solving. **800-333-7421**

### Siemens Training Center – Norcross, GA (Atlanta)

