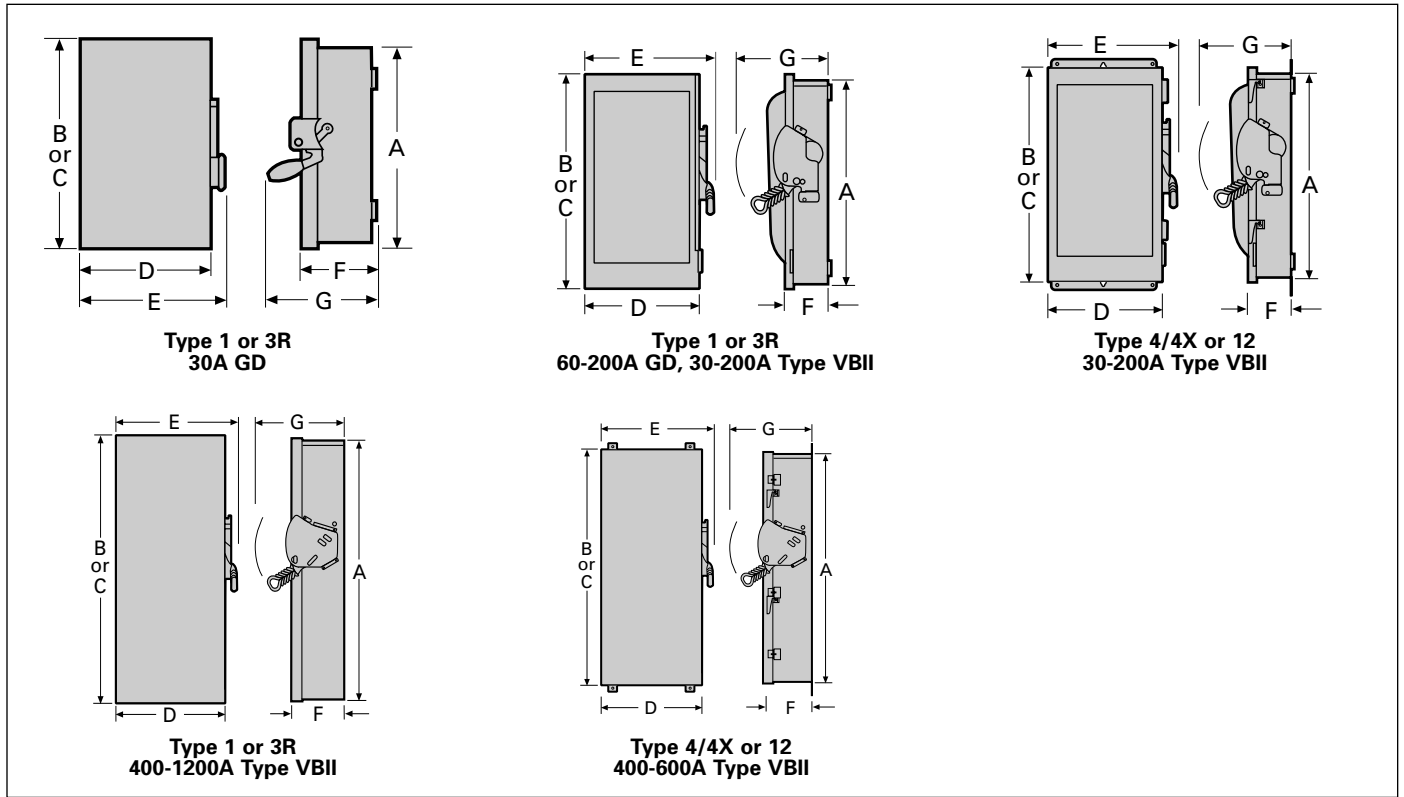


Safety Switches

Dimensions — Compact Switches, General Duty Switches



Safety Switch Dimensions²

Catalog Number	Height			Width		Depth		Knockout Diagram ¹
	Box	With Door	With Rain Shed	Box	With Handle	Box	With Handle	
	A	B	C	D	E	F	G	
GHN321N	7.97	8.13	—	5.50	5.94	3.00	5.88	S1
GHN321NW	8.07	—	8.16	5.16	5.94	3.13	5.88	S3
GHN322N	14.26	15.45	—	6.64	8.70	5.05	8.63	S6
GHN322NW	14.39	—	15.76	6.64	8.70	5.05	8.63	S8
GHN323N	21.95	23.15	—	9.64	11.70	5.05	8.63	S10
GHN323NW	21.95	—	23.46	9.64	11.67	5.05	8.70	S11
GHN324N	29.90	31.07	—	14.62	16.68	6.36	10.92	S12
GHN324NW	29.90	—	31.42	14.61	16.68	6.36	10.92	S13
GHN325N	56.00	56.57	—	24.64	26.21	9.23	14.68	S14
GHN325NH	45.25	45.82	—	24.64	26.21	9.23	14.68	S14
GHN325NW	56.07	—	57.19	24.64	26.70	9.23	14.68	S15
GHN325NWH	45.31	—	46.44	24.64	26.70	9.23	14.68	S15
GHN326N	56.00	56.57	—	24.64	26.21	9.23	14.68	S14
GHN326NH	45.25	45.82	—	24.64	26.21	9.23	14.68	S14
GHN326NW	56.07	—	57.19	24.64	26.70	9.23	14.68	S15
GHN326NWH	45.31	—	46.44	24.64	26.70	9.23	14.68	S15
GHN421N	7.97	8.19	—	7.19	7.69	3.00	5.88	S2
GHN421NW	8.07	—	8.16	7.19	8.16	3.13	5.88	S4
GHN422N	14.26	15.45	—	6.64	8.70	5.05	8.63	S6
GHN422NW	14.39	—	15.76	6.64	8.70	5.05	8.63	S8
GHN423N	21.95	23.15	—	9.64	11.70	5.05	8.63	S10
GHN423NW	21.95	—	23.46	9.64	11.67	5.05	8.70	S11
GHN424N	29.90	31.07	—	14.62	16.68	6.36	10.92	S12
GHN424NW	29.90	—	31.42	14.61	16.68	6.36	10.92	S13
GHN425N	56.00	56.57	—	24.64	26.21	9.23	14.68	S14
GHN425NH	45.25	45.82	—	24.64	26.21	9.23	14.68	S14
GHN425NW	56.07	—	57.19	24.64	26.70	9.23	14.68	S15
GHN425NWH	45.31	—	46.44	24.64	26.70	9.23	14.68	S15
GHN426N	56.00	56.57	—	24.64	26.21	9.23	14.68	S14
GHN426NH	45.25	45.82	—	24.64	26.21	9.23	14.68	S14
GHN426NW	56.07	—	57.19	24.64	26.70	9.23	14.68	S15
GHN426NWH	45.31	—	46.44	24.64	26.70	9.23	14.68	S15
GP211N	7.97	8.13	—	5.50	5.94	3.00	5.38	S2
GP321N	7.97	8.13	—	5.50	5.94	3.00	5.38	S1
GP321NW	8.07	—	8.16	5.16	5.94	3.13	5.38	S3
GU221	7.97	8.13	—	5.50	5.94	3.00	5.88	S1

¹Knocks not provided on Type 4/4X and 12 or in 800 & 1200A Switches.

²Accurate to ±1/8".

Safety Switches

Dimensions — General & Heavy Duty Switches

Safety Switch Dimensions^②

Catalog Number	Height ^④			Width		Depth		Knockout Diagram ^①
	Box	With Door	With Rain Shed	Box	With Handle	Box	With Handle	
	A	B	C	D	E	F	G	
GU221AW	8.07	—	8.16	5.16	5.94	3.13	5.38	S5
GU222AW	8.07	—	8.16	5.22	5.94	2.94	5.38	S5
GUN321	7.97	8.19	—	7.19	7.69	3.00	5.88	S2
GUN321AW	8.07	—	8.16	7.19	7.69	3.13	5.88	S4
GUN322	11.11	12.31	—	6.64	8.71	5.05	8.61	S7
GUN322AW	11.11	—	12.62	6.64	8.71	5.05	8.61	S9
GUN323	21.95	23.15	—	9.64	11.70	5.05	8.63	S10
GUN323AW	21.95	—	23.46	9.64	11.67	5.05	8.70	S11
GUN324	29.90	31.07	—	14.62	16.68	6.36	10.92	S12
GUN324AW	29.90	—	31.42	14.61	16.68	6.36	10.92	S13
HHN321AS	14.27	15.45	—	6.65	9.02	5.32	10.46	—
HHN321N	14.26	15.45	—	6.64	9.01	5.05	10.17	S6
HHN321NW	14.39	—	15.77	6.64	9.01	5.05	10.17	S8
HHN322AS	16.27	19.31	—	9.17	11.47	5.33	10.46	—
HHN322N	16.26	17.46	—	9.15	11.53	5.05	10.17	S16
HHN322NW	16.26	—	17.77	9.16	11.53	5.05	10.17	S17
HHN323N	21.95	23.15	—	9.64	12.01	5.05	10.17	S10
HHN323NW	21.95	—	23.46	9.64	11.97	5.05	10.17	S11
HHN324N	29.90	31.07	—	14.62	16.98	6.36	12.33	S12
HHN324NW	29.90	—	31.42	14.61	16.99	6.36	12.33	S13
HHN325N	56.00	56.57	—	24.64	26.21	9.23	14.68	S14
HHN325NH	45.25	45.82	—	24.64	26.21	9.23	14.68	S14
HHN325NW	56.07	—	57.19	24.64	26.70	9.23	14.68	S15
HHN325NWH	45.25	45.82	—	24.64	26.21	9.23	14.68	S14
HHN326N	56.00	56.57	—	24.64	26.21	9.23	14.68	S14
HHN326NH	45.25	45.82	—	24.64	26.21	9.23	14.68	S14
HHN326NW	56.07	—	57.19	24.64	26.70	9.23	14.68	S15
HHN326NWH	45.25	45.82	—	24.64	26.21	9.23	14.68	S15
HHN361	14.26	15.45	—	6.64	9.01	5.05	10.17	S6
HHN361AJ	14.27	15.45	—	6.65	9.02	5.32	10.46	—
HHN361AS	14.27	15.45	—	6.65	9.02	5.32	10.46	—
HHN361AW	14.39	15.45	15.77	6.64	9.01	5.05	10.17	S8
HHN362	16.26	17.46	—	9.15	11.53	5.05	10.17	S16
HHN362AJ	16.27	17.46	—	9.17	11.47	5.33	10.46	—
HHN362AW	16.26	—	17.77	9.16	11.53	5.05	10.17	S17
HHN362AS	16.27	17.46	—	9.17	11.47	5.33	10.46	—
HHN362CJ ^③	16.27	17.46	—	9.10	11.47	5.33	10.46	—
HHN361KJ ^③	14.27	15.45	—	6.65	9.02	5.32	10.46	—
HHN362KJ ^③	16.27	17.46	—	9.10	11.47	5.33	10.46	—
HHN362LJ ^③	16.27	17.46	—	9.10	11.47	5.33	10.46	—
HHN363	21.95	23.15	—	9.64	12.01	5.05	10.17	S10
HHN363AJ	21.96	23.16	—	9.65	12.02	5.34	10.46	—
HHN363AS	21.96	23.16	—	9.65	12.02	5.34	10.46	—
HHN363AW	21.95	—	23.46	9.64	11.97	5.05	10.17	S11
HHN364	29.90	31.07	—	14.62	16.98	6.36	12.33	S12
HHN364AJ	29.96	31.07	—	14.62	16.95	6.63	12.58	—
HHN364AS	29.96	31.07	—	14.62	16.95	6.63	12.58	—
HHN364AW	29.90	—	31.42	14.61	16.99	6.36	12.33	S13
HHN365	56.00	56.57	—	24.64	26.21	9.23	14.68	S14
HHN365H	45.25	45.82	—	24.64	26.21	9.23	14.68	S14
HHN365AW	56.07	—	57.19	24.64	26.70	9.23	14.68	S15
HHN365AWH	45.31	—	46.44	24.64	26.70	9.23	14.68	S15
HHN366	56.00	56.57	—	24.64	26.21	9.23	14.68	S14
HHN366H	45.25	45.82	—	24.64	26.21	9.23	14.68	S14
HHN366AW	56.07	—	57.19	24.64	26.70	9.23	14.68	S15
HHN366AWH	45.31	—	46.44	24.64	26.70	9.23	14.68	S15
HHN421N	14.26	15.45	—	6.64	9.01	5.05	10.17	S6
HHN421NW	14.39	—	15.77	6.64	9.01	5.05	10.17	S8
HHN422N	16.26	17.46	—	9.15	11.53	5.05	10.17	S16
HHN422NW	16.26	—	17.77	9.16	11.53	5.05	10.17	S17
HHN423N	21.95	23.15	—	9.64	12.01	5.05	10.17	S10
HHN423NW	21.95	—	23.46	9.64	11.97	5.05	10.17	S11
HHN424N	29.90	31.07	—	14.62	16.98	6.36	12.33	S12
HHN424NW	29.90	—	31.42	14.61	16.99	6.36	12.33	S13
HHN425N	56.00	56.57	—	24.64	26.21	9.23	14.68	S14
HHN425NH	45.25	45.82	—	24.64	26.21	9.23	14.68	S14
HHN425NW	56.07	—	57.19	24.64	26.70	9.23	14.68	S15
HHN425NWH	45.31	—	46.44	24.64	26.70	9.23	14.68	S15
HHN426N	56.00	56.57	—	24.64	26.21	9.23	14.68	S14
HHN426NH	45.25	45.82	—	24.64	26.21	9.23	14.68	S14
HHN426NW	56.07	—	57.19	24.64	26.70	9.23	14.68	S15
HHN426NWH	45.31	—	46.44	24.64	26.70	9.23	14.68	S15
HHN461NW	14.39	—	15.77	6.64	9.01	5.05	10.17	S8
HHN462NW	16.26	—	17.77	9.16	11.53	5.05	10.17	S17
HLN327N	66.25	66.82	—	38.40	39.96	9.24	14.68	—
HLN328N	66.25	66.82	—	38.40	39.96	9.24	14.68	—
HLN367	66.25	66.82	—	38.40	39.96	9.24	14.68	—
HLN367AW	66.25	—	67.36	38.40	39.96	9.24	14.68	—

①Knocks not provided on Type 4/4X and 12 or in 800 & 1200A Switches.

②Dimensions are for switch less receptacle and mounting feet.

③Accurate to ±1/8".

④Dimensions are less mounting feet on Type 12 and 4X switches.

Safety Switches

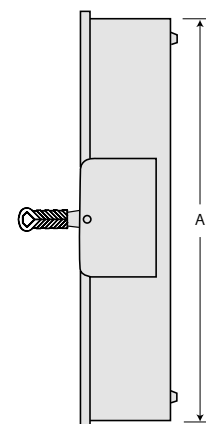
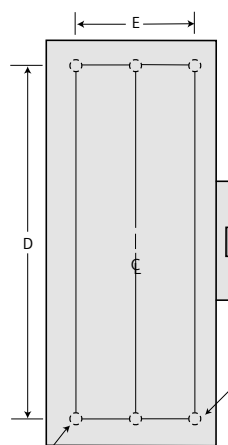
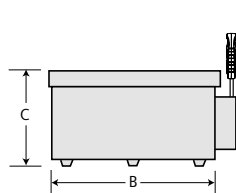
Dimensions — General & Heavy Duty Switches, Protector-Lock® Switches, Double Throw Switches

Safety Switch Dimensions^{③④}

Catalog Number	Height			Width		Depth		Knockout Diagram ^①
	Box	With Door	With Rain Shed	Box	With Handle	Box	With Handle	
	A	B	C	D	E	F	G	
HLN368	66.25	66.82	—	38.40	39.96	9.24	14.68	—
HLN368AW	66.25	—	67.36	38.40	39.96	9.24	14.68	—
HLN427N	66.25	66.82	—	38.40	39.96	9.24	14.68	—
HLN427NW	66.25	—	67.36	38.40	39.96	9.24	14.68	—
HLN428N	66.25	66.82	—	38.40	39.96	9.24	14.68	—
HLN428NW	66.25	—	67.36	38.40	39.96	9.24	14.68	—
HUN361	11.11	12.31	—	6.64	9.01	5.05	10.17	S7
HUN361AJ	11.12	12.31	—	6.65	9.02	5.56	10.46	—
HUN361AW	11.11	—	12.63	6.64	9.01	5.05	10.17	S9
HUN361AS	11.12	12.31	—	6.65	9.02	5.56	10.46	—
HUN362	16.26	17.46	—	9.15	11.53	5.05	10.17	S16
HUN362AJ	16.27	17.46	—	9.17	11.47	5.33	10.46	—
HUN362AW	16.26	—	17.77	9.16	11.53	5.05	10.17	S17
HUN362AS	16.27	17.46	—	9.17	11.47	5.33	10.46	—
HUN362CJ ^②	16.26	17.46	—	9.17	—	5.33	10.46	—
HUN363	21.95	23.15	—	9.64	12.01	5.05	10.17	S10
HUN363AJ	21.96	23.16	—	9.65	12.02	5.34	10.46	—
HUN363AS	21.96	23.16	—	9.65	12.02	5.34	10.46	—
HUN363AW	21.95	—	23.46	9.64	11.97	5.05	10.17	S11
HUN364	29.90	31.07	—	14.62	16.98	6.36	12.33	S12
HUN364AJ	29.96	31.07	—	14.62	16.95	6.63	12.58	—
HUN364AS	29.96	31.07	—	14.62	16.95	6.63	12.58	—
HUN364AW	29.90	—	31.42	14.61	16.99	6.36	12.33	S13
HUN365	44.00	44.57	—	24.64	26.21	9.23	14.68	S14
HUN365AJ	44.14	44.57	—	24.82	26.44	9.19	14.64	—
HUN365AW	44.07	—	45.19	24.64	26.95	9.23	14.68	S15
HUN366	44.00	44.57	—	24.64	26.21	9.23	14.68	S14
HUN366AW	44.07	—	45.19	24.64	26.95	9.23	14.68	S15

VBI Design Double Throw Dimensions (Inches)^⑤

Catalog Number	Enclosure			Mounting		
	A	B	C	D	E	F
(30-600A Type 1 & 3R)^⑤						
HDUN221, HDUN321, HDUN361, HDUN361AW	24.50	9.53	6.09	19.00	6.75	0.268
HDHN321, HDHN321AW	29.12	9.53	6.09	23.50	6.75	0.268
HDUN222, HDUN322, HDUN362, HDUN362AW	24.88	11.50	6.09	19.00	9.38	0.268
HDHN322, HDHN322AW	33.53	11.50	6.09	27.50	9.38	0.268
HDUN223, HDUN323, HDUN323AW, HDUN363, HDUN363AW	27.62	12.18	6.09	19.36	8.00	0.268
HDHN323, HDHN323AW	36.44	12.18	6.09	28.11	8.00	0.268
HDUN224, HDUN324, HDUN224AW, HDUN324AW, HDUN364, HDUN364AW	36.00	19.12	6.42	31.02	15.00	0.44
HDHN324	49.48	19.12	6.42	44.50	15.00	0.44
HDHN325	74.00	28.38	9.38	65.50	16.00	0.56
HDUN225, HDUN325, HDUN225AW, HDUN365, HDUN365AW, HDUN366AW	57.78	28.38	9.38	49.75	16.00	0.56



- ① Knockouts not provided on Type 4/4X and 12 or on 800 & 1200A switches.
- ② Dimensions are for switch-less receptacle & mounting feet.
- ③ Accurate to $\pm \frac{1}{8}$ ".
- ④ For dimensions in millimeters, multiply inches by 25.4.
- ⑤ Drip hood not shown but supplied on Type 3R enclosures.

This mounting hole omitted on 30-100A Non-Fusible switches

(6) "F" Dia. mounting holes (30-200A)
(4) "F" Dia. mounting holes (400-1200A)