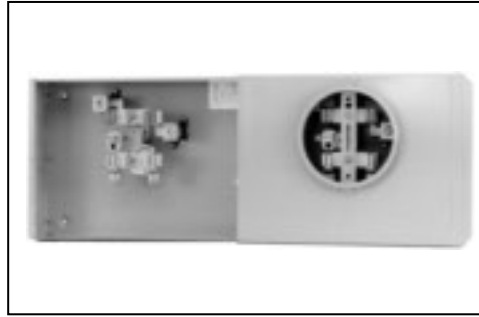


# Meter Sockets

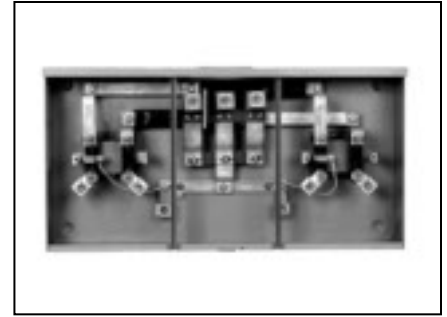
## Ring Type



SN251CR



SC250C



SS251CR

### 100/80 Amp/Position Meter Mounting Equipment 1 Phase, 3 Wire, 300V Multi-Position Residential End Feed

Catalog Number	Dimensions (inches)			Bus Amps	Cont. Amps	Service	No. of Pos.	No. of Jaws	5th Jaw	Hub	Line Lugs	Load Lugs	KO Fig.	List Price \$
	H	W	D											
NO BYPASS														
SN211AR	14.1	27.6	5.3	200	100	OH/UG	2	4	EC659-0121	RX Opening	#6-250	#8-2/0	27	324.83
SN311AR	14.1	35.8	5.3	200	100	OH/UG	3	4	EC659-0121	RX Opening	#6-250	#8-2/0	28	455.82
SN411AR	14.1	44.0	5.3	200	100	OH/UG	4	4	EC659-0121	RX Opening	#6-250	#8-2/0	29	590.01
SN251CR	13.5	16.8	4.1	200	100	OH	2	5	Installed	RX CL. Plate	#6-250	#8-2/0	30	404.70
SN351CR	13.5	25.5	4.1	200	100	OH	3	5	Installed	RX CL. Plate	#6-250	#8-2/0	31	590.01
SN451CR	13.5	34.1	4.1	200	100	OH	4	5	Installed	RX CL. Plate	#6-250	#8-2/0	32	772.13
SC150C <sup>Ⓞ</sup>	11.3	15.3	3.9	200	80	OH/UG	1	5	Installed	1.25" KO	#6-4/0	#8-2/0	24	176.00
SC250C <sup>Ⓞ</sup>	11.3	30.5	3.9	200	80	OH/UG	2	5	Installed	1.25" KO	#6-4/0	#8-2/0	25	351.00
SC350C <sup>Ⓞ</sup>	11.3	45.6	3.9	200	80	OH/UG	3	5	Installed	1.25" KO	#6-4/0	#8-2/0	26	531.00

### 100 Amp/Position Meter Mounting Equipment 1 Phase, 3 Wire, 300V Multi-Position Vertical Mounting

Catalog Number	Dimensions (inches)			Bus Amps	Cont. Amps	Service	No. of Pos.	No. of Jaws	5th Jaw	Hub	Line Lugs	Load Lugs	KO Fig.	List Price \$
	H	W	D											
NO BYPASS														
SN205CX	25.6	8	4.4	200	100	OH	2	5	Installed	RX Opening	#8-350	#8-2/0	44	426.00
SN305CX	37.9	8	4.4	200	100	OH	3	5	Installed	RX Opening	#8-350	#8-2/0	45	609.18

### 200 Amp/Position Meter Mounting Equipment 1 Phase, 3 Wire, 300V Multi-Position Residential Center Feed

Catalog Number	Dimensions (inches)			Bus Amps	Cont. Amps	Service	No. of Pos.	No. of Jaws	5th Jaw	Hub	Line Lugs	Load Lugs	KO Fig.	List Price \$
	H	W	D											
NO BYPASS														
SS251CR	14.1	28	5.4	200	200	OH/UG	2	5	Installed	HD Opening	#1/0-500	#8-250	19	438.78
SS351CR	14.1	38	5.4	270	200	OH/UG	3	5	Installed	HD Opening	#1/0-500	#8-250	20	613.44
SS451CR	14.1	48	5.4	360	200	OH/UG	4	5	Installed	HD Opening	#1/0-500	#8-250	21	787.04

Contact utility or sales office for approval by your local utility prior to installation.

<sup>Ⓞ</sup>Unit is unbussed, indoor, and gangable.