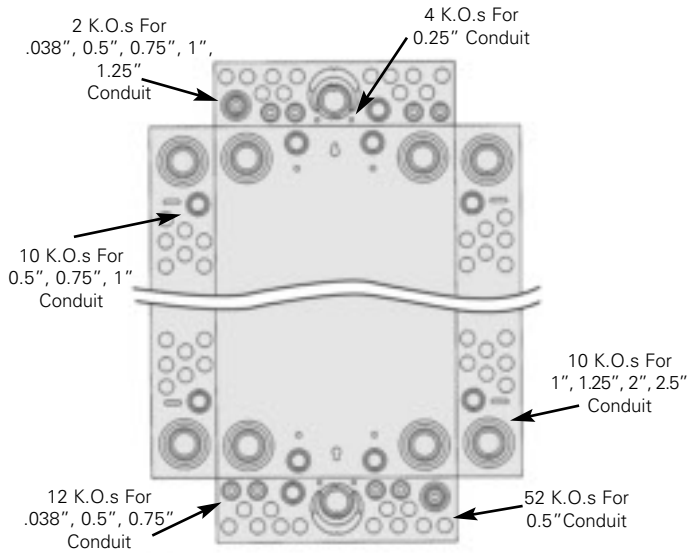


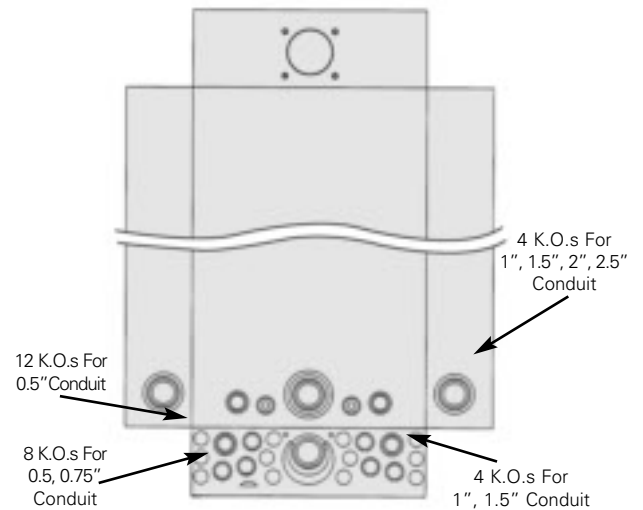
Knockout Diagrams

Rock Solid Load Centers

Indoor Main Breaker and Main Lug Enclosures



Outdoor Main Breaker and Main Lug Enclosures



K.O. dimensions refer to conduit trade size, not actual diameter.

Figure 1

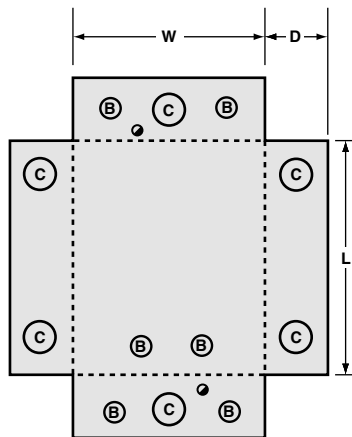


Figure 2

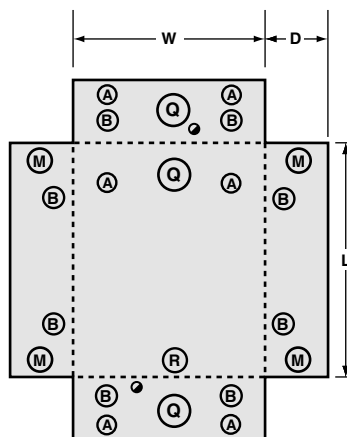


Figure 3

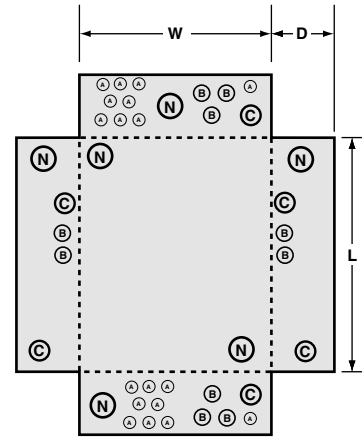
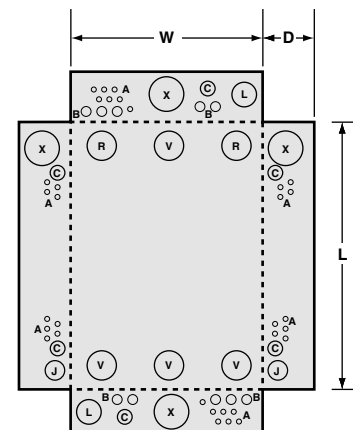


Figure 4



Knockout Code—Conduit Sizes

● = 3/8"	S = 1, 1 1/4, 1 1/2, 2, 2 1/2
A = 1/2"	T = 1 1/4"
B = 3/4, 3/8"	U = 1 1/4, 1 1/2"
C = 1/2, 3/4, 1"	V = 1 1/4, 1 1/2, 2
D = 3/8, 1"	W = 1 1/4, 2"
E = 1/2, 3/4, 1, 1 1/4"	X = 1 1/4, 1 1/2, 2, 2 1/2"
F = 1/2, 1 1/4, 1 1/2"	Y = 1 1/2, 2"
G = 3/8"	Z = 1 1/2, 2, 2 1/2"
H = 3/4, 1"	AA = 1 1/2, 2, 2 1/2, 3"
J = 3/4, 1, 1 1/4"	BB = 1 1/2, 2, 2 1/2, 3, 3 1/2"
K = 3/4, 1 1/4"	CC = 2, 2 1/2, 3, 3 1/2"
L = 1/2, 3/4, 1, 1 1/4, 1 1/2"	EE = 2, 2 1/2, 3"
M = 3/4, 1, 1 1/4, 1 1/2"	FF = 2 1/2, 3"
N = 3/4, 1, 1 1/4, 1 1/2, 2"	GG = 2 1/2, 3, 3 1/2"
P = 1, 1 1/4"	HH = 2 1/2, 3, 3 1/2, 4"
Q = 1, 1 1/4, 1 1/2"	JJ = 3 1/2, 4"
R = 1, 1 1/4, 1 1/2, 2"	LL = 3"
	VV = 2"

Knockout Diagrams

Indoor and Outdoor Enclosures

Figure 5

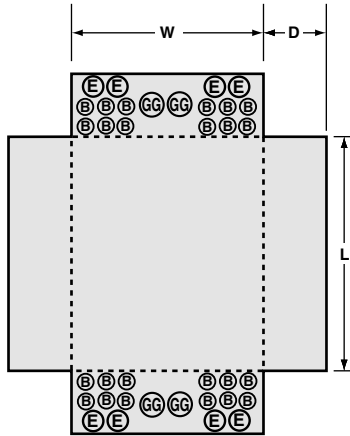


Figure 6

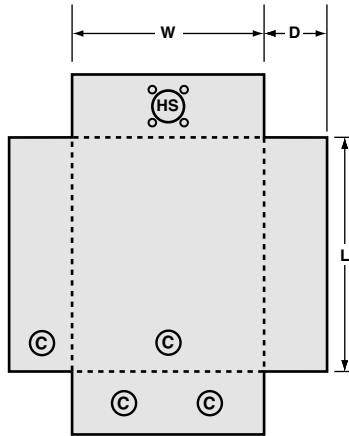


Figure 7

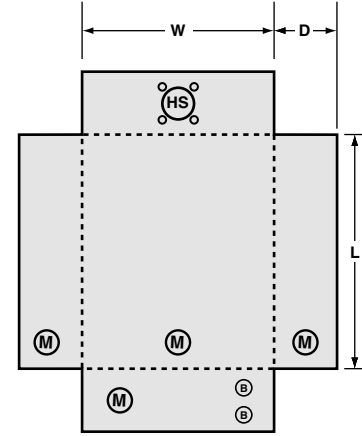


Figure 8

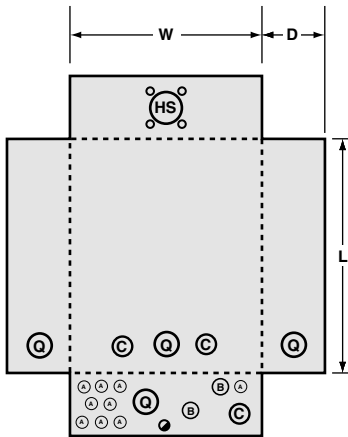


Figure 9

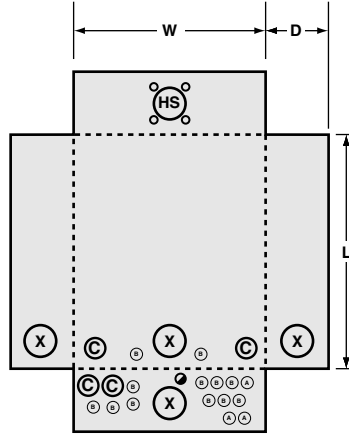


Figure 10

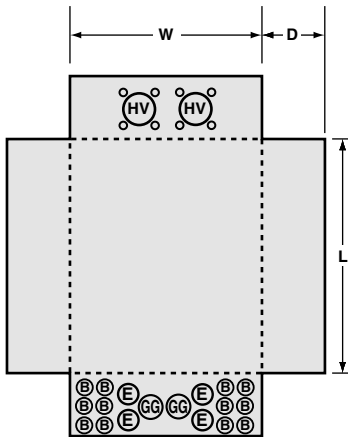
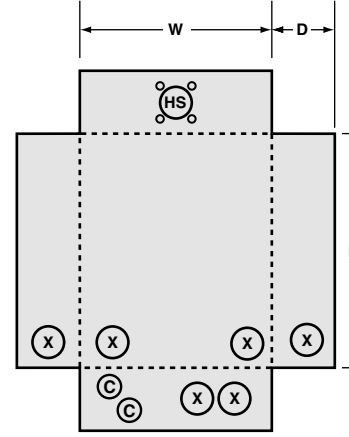


Figure 11



Knockout Code—Conduit Sizes

● = 1/4	S = 1, 1 1/4, 1 1/2, 2, 2 1/2
A = 1/2	T = 1 1/4
B = 3/4, 1	U = 1 1/4, 1 1/2
C = 1/2, 3/4, 1	V = 1 1/4, 1 1/2, 2
D = 1/2, 1	W = 1 1/4, 2
E = 1/2, 3/4, 1, 1 1/4	X = 1 1/4, 1 1/2, 2, 2 1/2
F = 1/2, 1 1/4, 1 1/2	Y = 1 1/2, 2
G = 3/4	Z = 1 1/2, 2, 2 1/2
H = 3/4, 1	AA = 1 1/2, 2, 2 1/2, 3
J = 3/4, 1, 1 1/4	BB = 1 1/2, 2, 2 1/2, 3, 3 1/2
K = 3/4, 1 1/4	CC = 2, 2 1/2, 3, 3 1/2
L = 1/2, 3/4, 1, 1 1/4, 1 1/2	EE = 2, 2 1/2, 3
M = 3/4, 1, 1 1/4, 1 1/2	FF = 2 1/2, 3
N = 3/4, 1, 1 1/4, 1 1/2, 2	GG = 2 1/2, 3, 3 1/2
P = 1, 1 1/4	HH = 2 1/2, 3, 3 1/2, 4
Q = 1, 1 1/4, 1 1/2	JJ = 3 1/2, 4
R = 1, 1 1/4, 1 1/2, 2	LL = 3
	VV = 2